





Flow Metre/ Data Logger - Radio Transmission Unit's

Client: City West Water, Victoria, Australia



Built on
ThruBeam
TECHNOLOGY

Project Overview:

Project:

Installation of 10 x Terra Firma ThruBeam E400 composite covers in and around Melbourne CBD to allow the transmission of data logged from flow metres via Radio Transmission Unit's (RTU's) installed underground, inside manholes.

Problem:

Conventional ductile iron/ concrete infill covers are not transparent to radio frequencies—therefore require costly trenching, cabling and external transmitters for RTU's.

Need:

Covers needed to be transparent to radio frequencies. Gas tight/ water tight, lightweight, easy to inspect, strong pit lids
Must withstand heavy vehicle traffic

Solution:

- Terra Firma ThruBeam E400 ER-60 composite frame & covers are;
- Transparent to radio frequencies.
- Gas tight/ water tight seal. Cover weight 28kg
- NATA tested to AS3996 Class E (400kN).
- Can be opened in seconds with specialised seal breaker / lifter

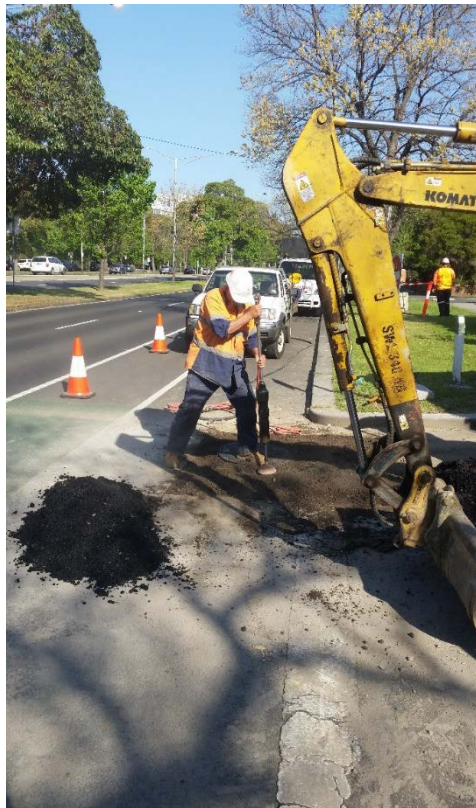
TERRA FIRMA PIT LIDS™



Flow Metre/ Data Logger RTU Project

Client: City West Water, Victoria, Australia

Built on
ThruBeam[®]
TECHNOLOGY



Installation Photos:

TERRA FIRMA PIT LIDS™



RFID Friendly Smart Cover – Yarra Trams

Client: **yarra trams** – Melbourne Victoria



Built on

ThruBeam[®]
TECHNOLOGY

Project Overview:

Project:

As part of network wide improvements to the Melbourne tramways, all trams are now fitted with RFID tags to electronically identify and track trams, allow automatic track allocation and streamline maintenance and stabling.

Problem:

RFID antenna's need to be safely housed in in-road pits. Conventional ductile iron/ concrete infill covers are not transparent to radio waves and are too heavy to lift for maintenance activities.

Need:

Covers need to be transparent to radio frequencies. Gas tight/ water tight, lightweight, easy to inspect, strong durable pit lids

Must withstand heavy vehicle traffic.

Solution:

- **Terra Firma ThruBeam E400 ER-60** composite frame & covers are;
- Transparent to radio frequencies.
- Gas tight/ water tight seal. Cover weight 28kg
- NATA tested to AS3996 Class E (400kN).
- Can be opened in seconds with specialised seal breaker / lifter.

TERRA FIRMA PIT LIDS™



**TERRA FIRMA
INDUSTRIES**



139 Somerset Rd,
Campbellfield, VIC 3016



+61 3 9357 1230



info@tfpl.com.au



www.terrafirmapitlids.com

